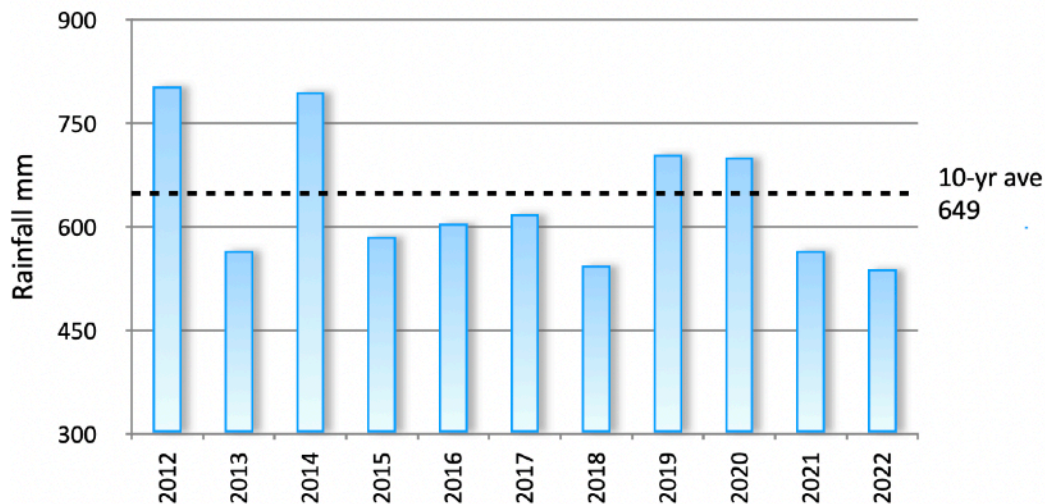


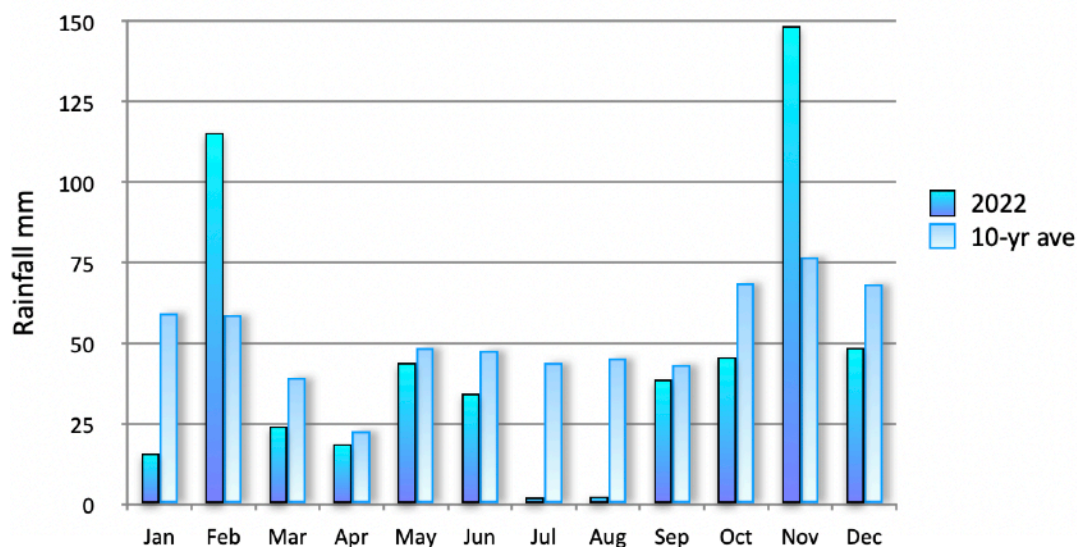
Wickham Market Weather Report for 2022

Following two wet years in 2019 and 2020, 2022 followed the drier trend of 2021, with almost 25% less rain than the average for the previous 10 years.

Annual Rainfall



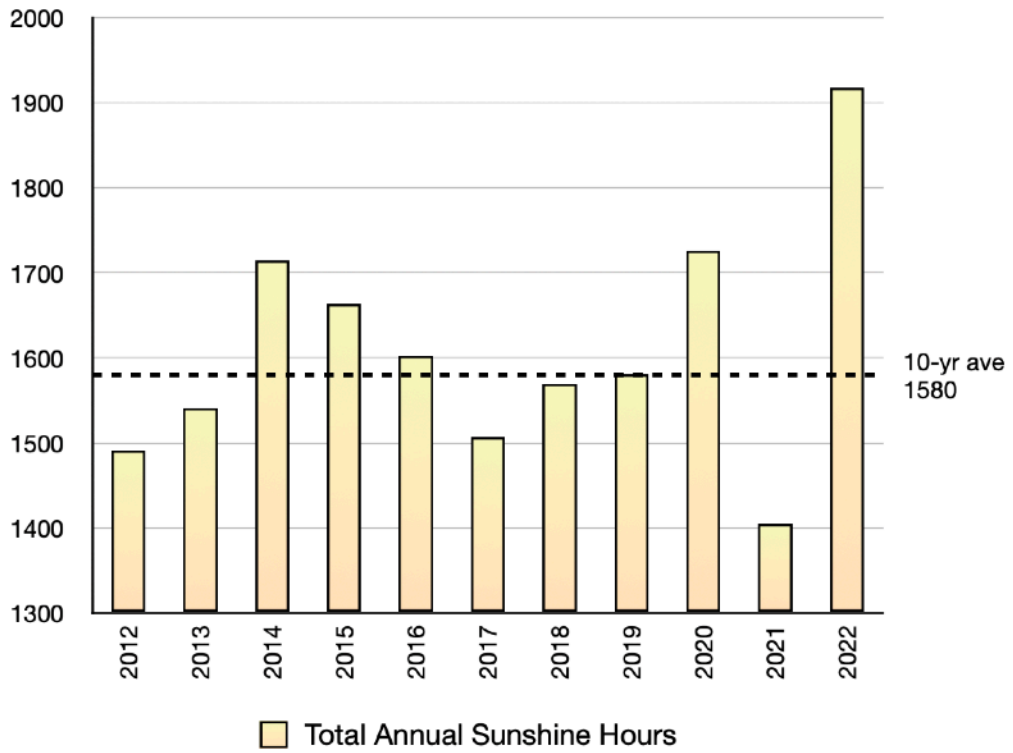
Monthly Rainfall



February and November were significantly wetter than the 10-year average, but all the months from March to October were drier, July and August were exceptionally dry with a total of just 4.5 mm for the whole of the two month period. Temperature records were broken around the country.

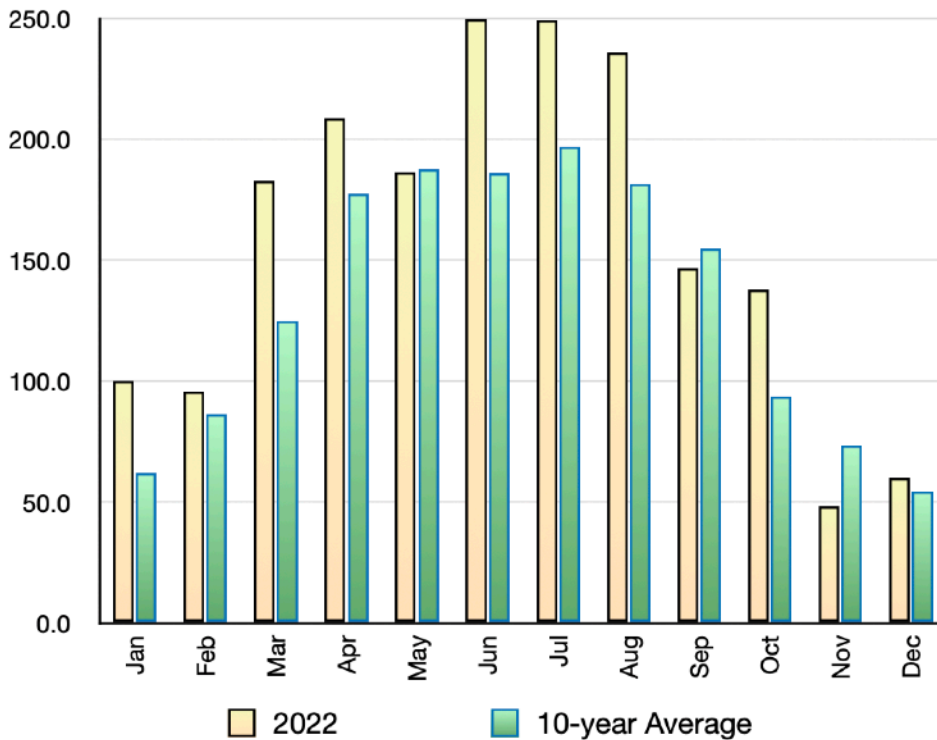
Not surprisingly July and August were also notably sunny with sunshine hours well above the 10-year averages. The charts below shows hours of sunshine that were recorded at Wattisham (our local Met Office recording station).

Total Annual Sunshine Hours

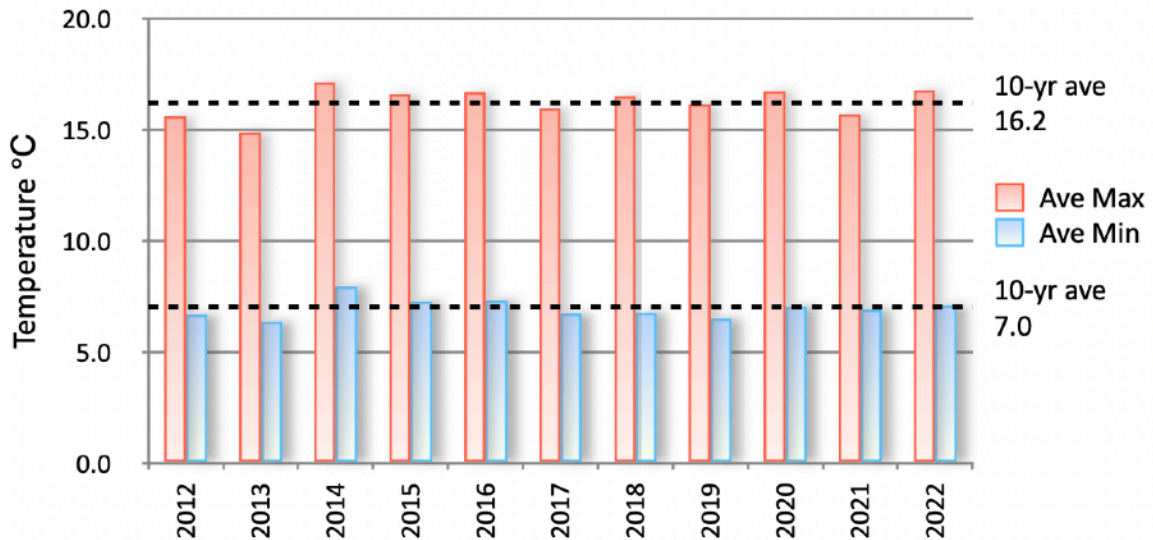


Overall sunshine hours were 20% above the 10-year average. January, March, April, June, July, August and October were all significantly above their 10-year averages.

Monthly Sunshine Hours and 10-yr average



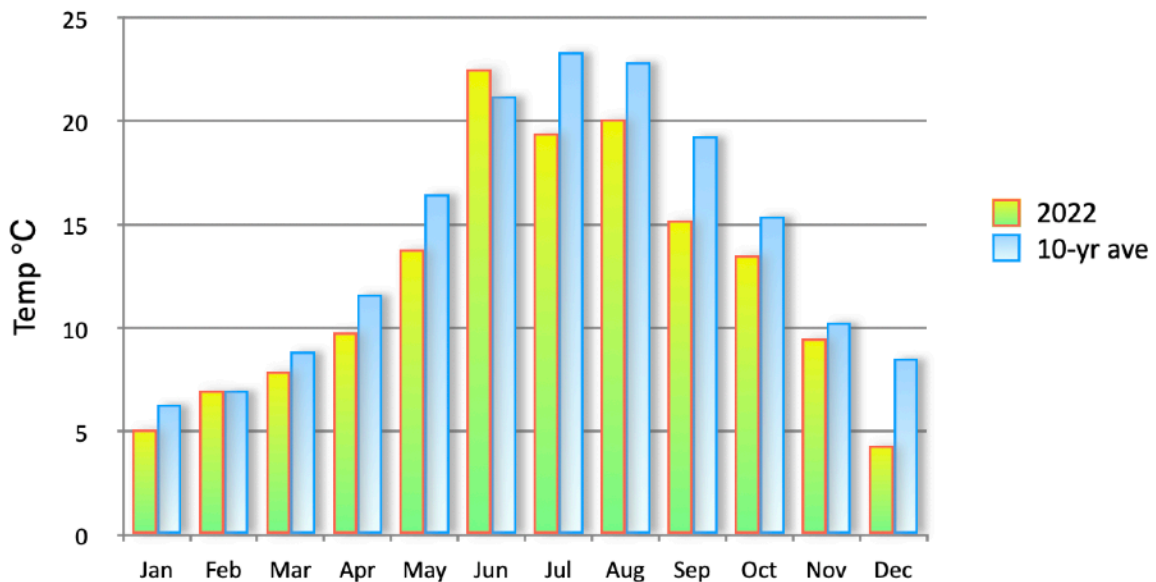
Average Max and Min Temperatures



The average Maximum and Minimum temperatures recorded in Wickham were not far from the 10-year averages.

However the Average temperatures (taken over the full 24 hour period) were below the expected values in every month except June. July and August had plenty of clear days but this gave us cool nights keeping the average temperatures down. The whole period from August to December was below the expected values.

Average Monthly Temperatures



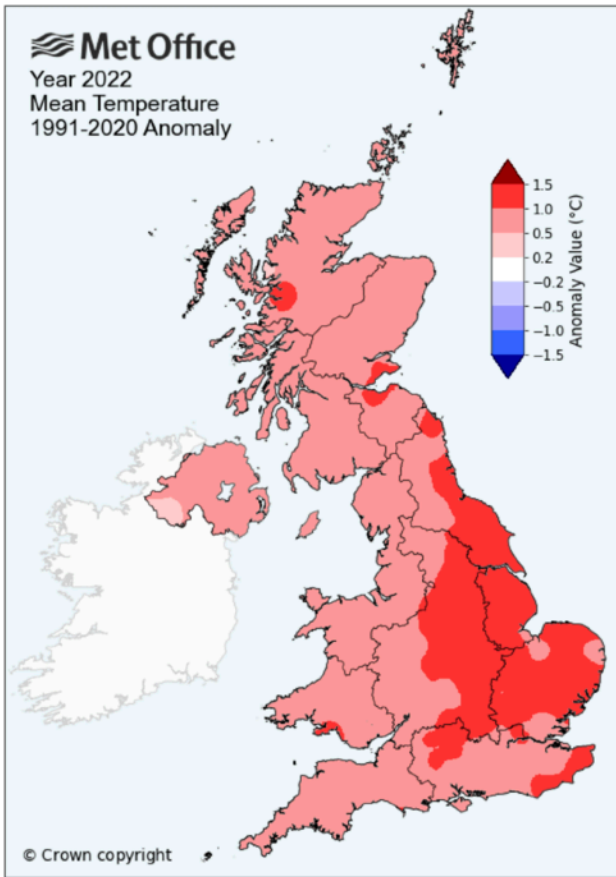
For the country as a whole 2022 was drier, warmer and sunnier than the average for the previous 10 years. This is demonstrated very clearly by the Met Office's Anomaly Maps, which you can find at:

<https://www.metoffice.gov.uk/research/climate/maps-and-data/uk-actual-and-anomaly-maps>

This webpage is well worth visiting as it shows all sorts of interesting comparisons. A small

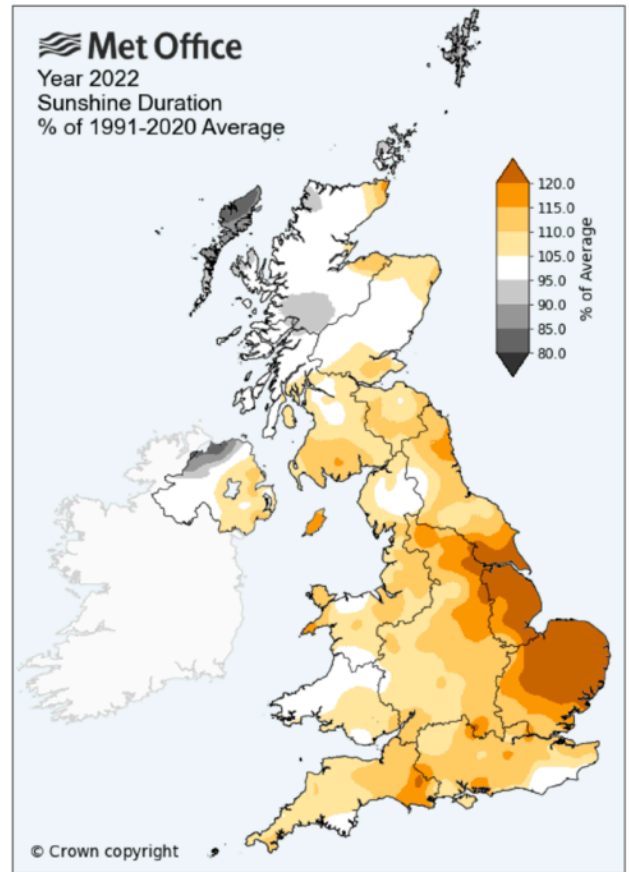
Mean temperature 1991 - 2020 anomaly

Annual 2022



Sunshine 1991 - 2020 anomaly

Annual 2022



Rainfall 1991 - 2020 anomaly

Annual 2022

